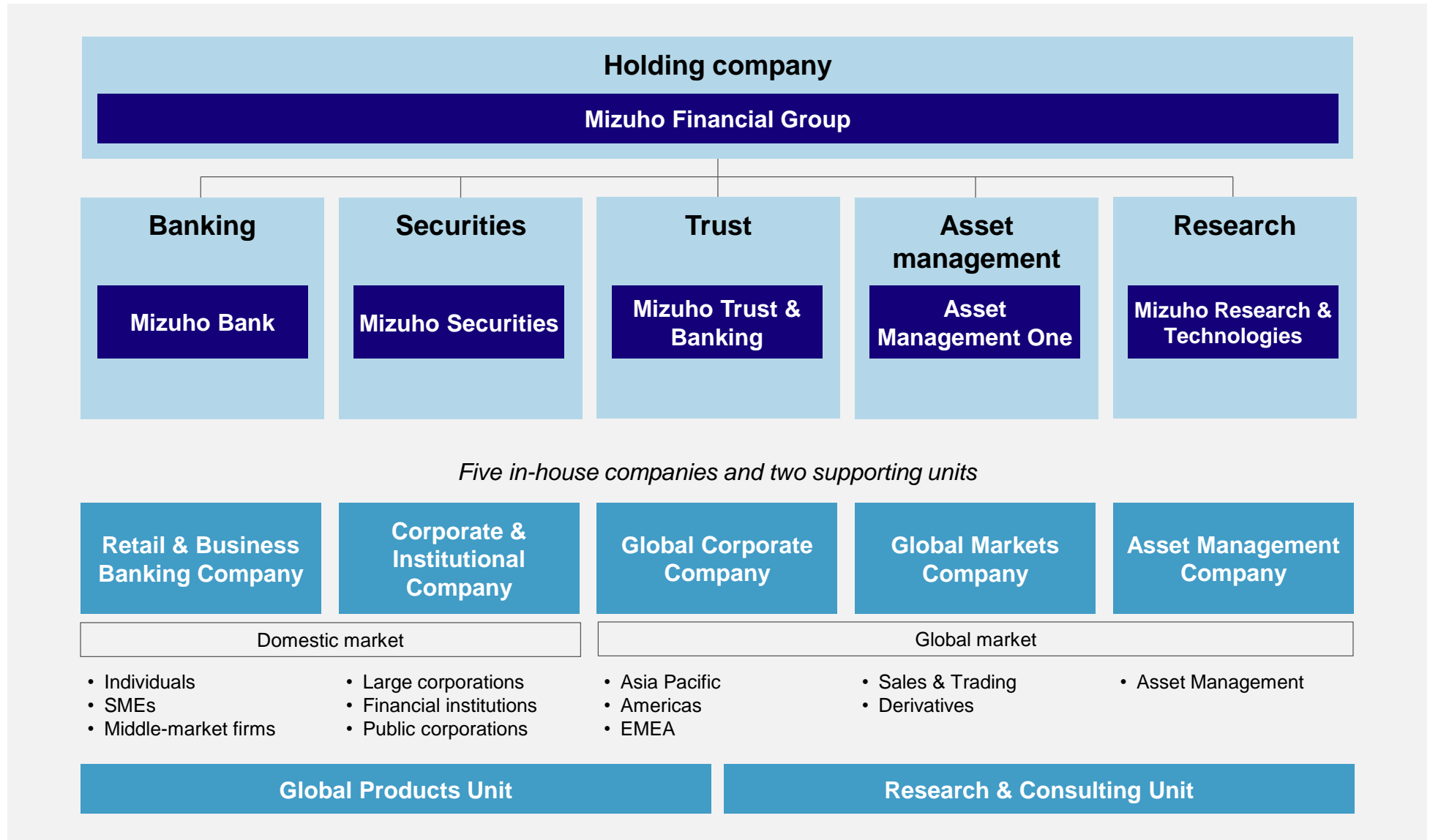




# About Mizuho

# 1. Mizuho Financial Group

# Organizational structure

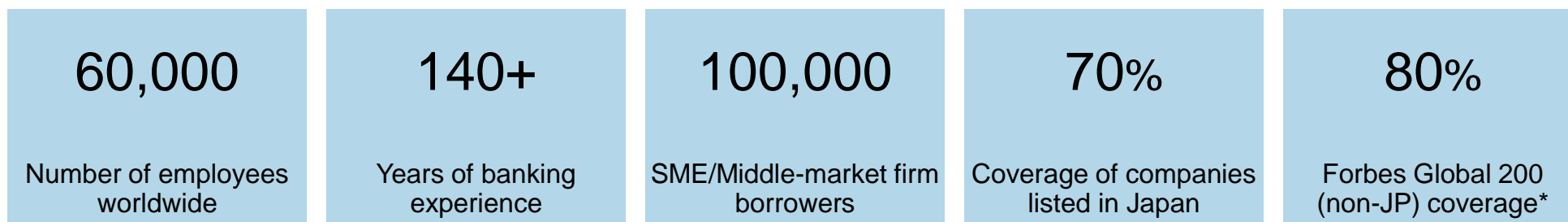


# Mizuho Financial Group overview

**Mizuho is one of the world's largest full-service financial conglomerates.**

- Offices in over 100 locations outside of Japan and approximately 60,000 employees worldwide
- 140+ years of banking experience
- Listed on the Tokyo Stock Exchange (TSE) and the New York Stock Exchange (NYSE)\*

\* American Depository Receipt (ADR)



\* Top 200 corporations from Forbes Global 2000 (excluding financial institutions)

FY2021 (Apr. 2021–Mar. 2022)	Mizuho Financial Group	Mizuho Bank <sup>1</sup>
Total Assets	JPY 237.0 trillion	JPY 209.0 trillion
Net Business Profits <sup>2</sup>	JPY 851.2 billion	JPY 568.2 billion
Common Equity Tier 1 (CET1) Capital Ratio <sup>3</sup>	12.46% (9.3%)	11.20%
Long-term Ratings (SP/MDY/Fitch) <sup>4</sup>	A- / A1 / A-	A / A1 / A-

Note: Financial accounting basis. Consolidated basis for Mizuho Financial Group. Non-consolidated basis for Mizuho Bank.

1. Mizuho Corporate Bank and Mizuho Bank merged to become Mizuho Bank on July 1, 2013.

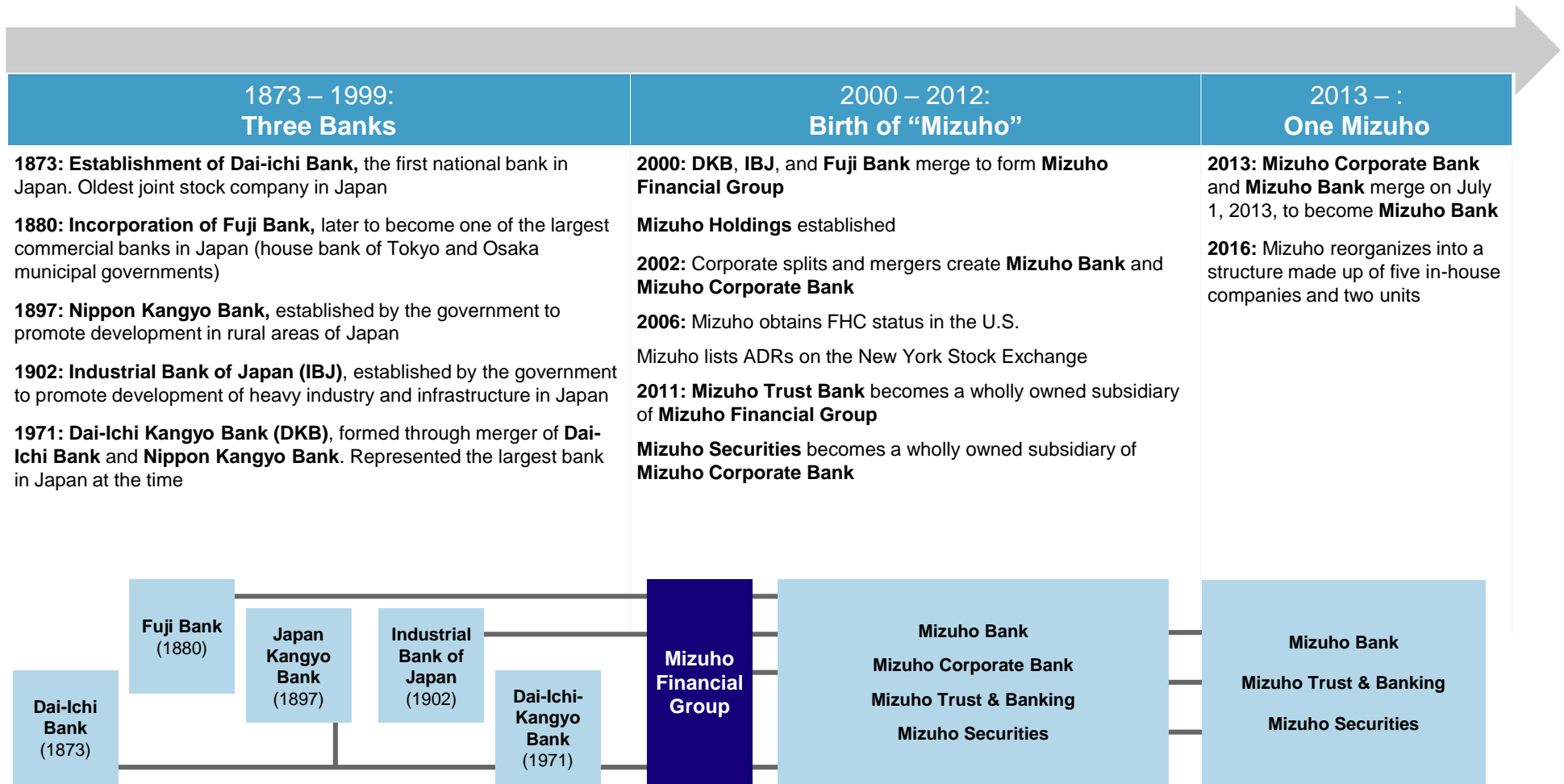
2. Excluding the amounts of credit costs of trust accounts, before reversal of (provision for) general reserve for losses on loans. FG consolidated net business profits + Net gains or losses related to ETFs and others were JPY 853.1 billion.

3. Basel III preliminary basis (Basel III finalization basis in parenthesis).

4. External ratings as of March 31, 2022. The rating for Mizuho Bank includes Mizuho Trust & Banking.

# History of Mizuho Financial Group at a glance

Mizuho's roots lie in some of the largest, most influential financial institutions in Japanese history, giving Mizuho a distinct edge over the competition.



## 2. Global presence

# Global reach

---

Mizuho is one of the largest, full-service financial institutions in the world, with approximately 60,000 employees in 35 countries/regions outside of Japan and nearly 150 years of banking experience.

As of April 1, 2022

## AMERICAS

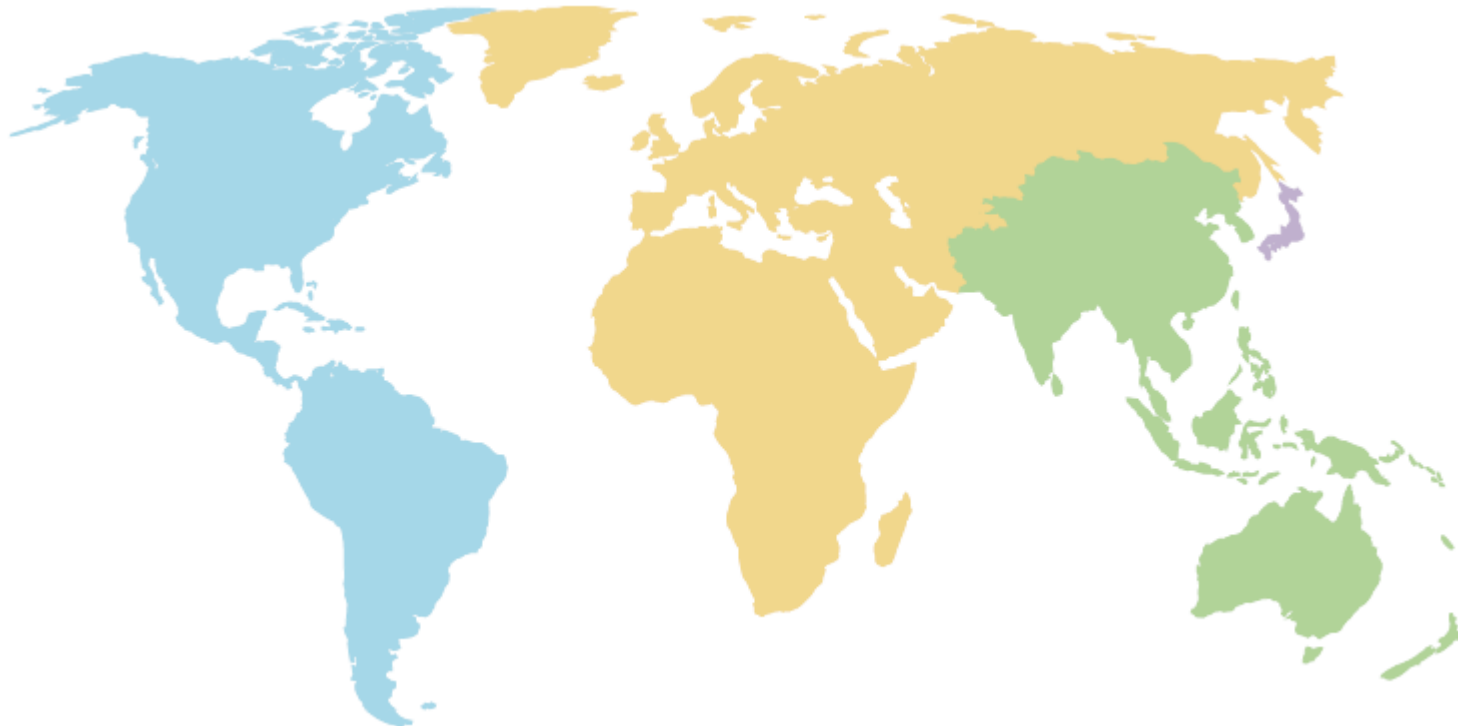
32 offices in 5 countries

## EMEA

25 offices in 16 countries

## ASIA PACIFIC

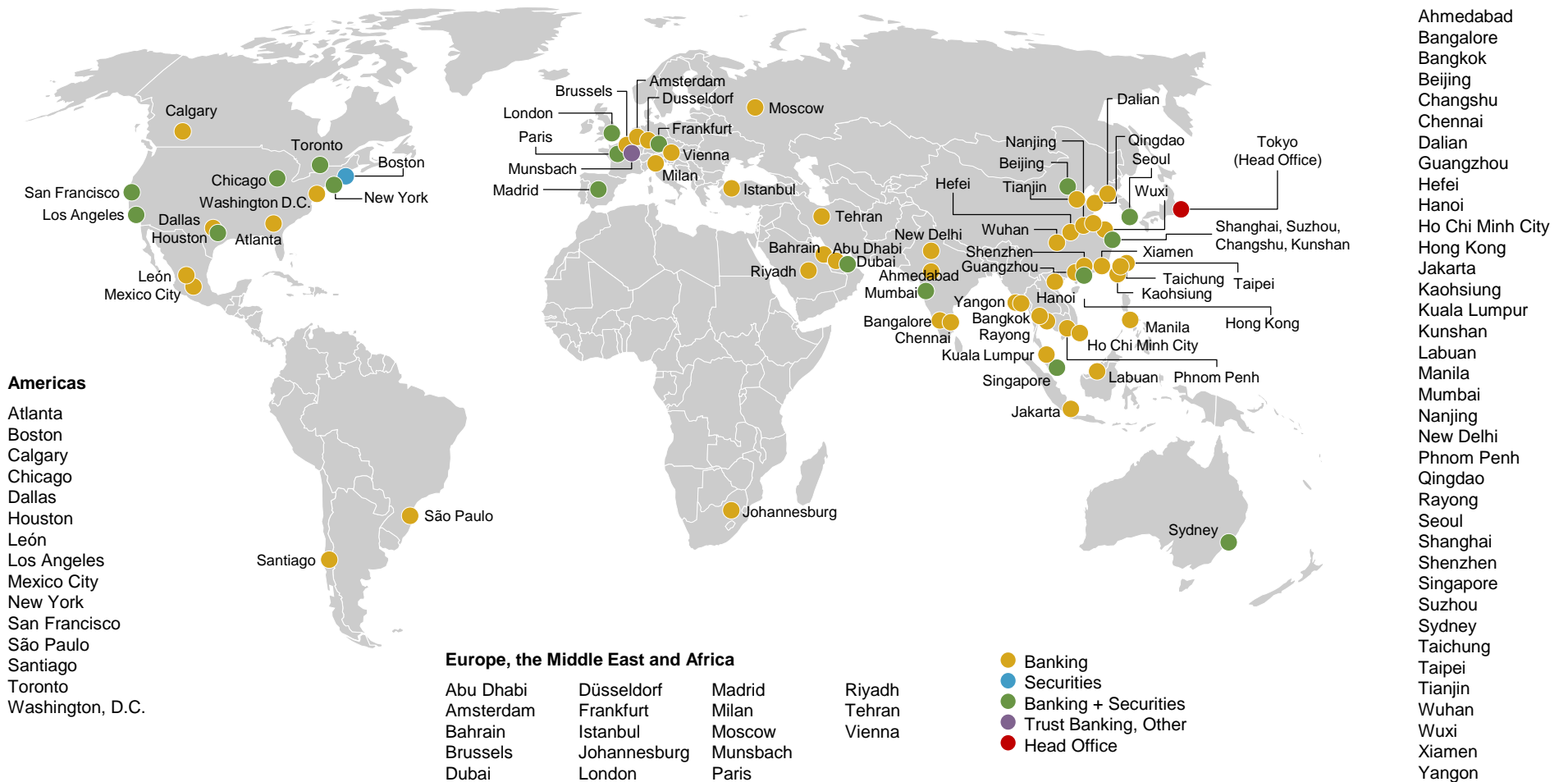
52 offices in 14 countries/regions, excluding Japan



# Global reach

Mizuho is one of the largest, full-service financial institutions in the world, with approximately 60,000 employees in 35 countries/regions outside of Japan and nearly 150 years of banking experience.

As of April 1, 2022





# Mizuho in East Asia (excl. Japan)

Mizuho has an especially strong presence in China, with a locally incorporated subsidiary, Mizuho Bank (China), and its 15 branches/offices, as well as 2 representative offices of the parent Mizuho Bank.



- Mizuho Bank Branches and Sub-Branches
- ▲ Mizuho Bank Representative Offices
- Mizuho Bank Subsidiaries, etc.
- ◆ Mizuho Securities, Mizuho Trust & Banking, and other subsidiaries, etc.

## Hong Kong ●◆◆

- Hong Kong Branch
- Mizuho Securities Asia Limited
- Asset Management One Hong Kong Limited

## Korea ●◆

- Seoul Branch
- Mizuho Securities Asia Limited Seoul Branch

## Taiwan ●●●

- Taipei Branch
- Taichung Branch
- Kaohsiung Branch

## China (Mainland)

### Beijing ■◆

- Mizuho Bank (China), Ltd. Beijing Branch
- Mizuho Securities Beijing Rep. Office

### Changshu ■

- Mizuho Bank (China), Ltd. Changshu Sub-Branch

### Dalian ■■

- Mizuho Bank (China), Ltd. Dalian Branch
- Mizuho Bank (China), Ltd. Dalian Economic & Technological Development Area Sub-Branch

### Guangzhou ■

- Mizuho Bank (China), Ltd. Guangzhou Branch

### Hefei ■

- Mizuho Bank (China), Ltd. Hefei Branch

### Kunshan ■

- Mizuho Bank (China), Ltd. Kunshan Sub-Branch

### Nanjing ▲

- Nanjing Rep. Office

### Qingdao ■

- Mizuho Bank (China), Ltd. Qingdao Branch

### Shanghai ■■◆◆

- Mizuho Bank (China), Ltd. (HQ)
- Mizuho Bank (China), Ltd. Shanghai Hongqiao Sub-Branch
- Mizuho Securities Shanghai Rep. Office
- Mizuho Information & Research Institute (Shanghai), Inc.

### Shenzhen ■

- Mizuho Bank (China), Ltd. Shenzhen Branch

### Suzhou ■

- Mizuho Bank (China), Ltd. Suzhou Branch

### Tianjin ■

- Mizuho Bank (China), Ltd. Tianjin Branch

### Wuhan ■

- Mizuho Bank (China), Ltd. Wuhan Branch

### Wuxi ■

- Mizuho Bank (China), Ltd. Wuxi Branch

### Xiamen ▲

- Xiamen Rep. Office

As of April 1, 2022

# Mizuho in Asia and Oceania (excl. East Asia)

Mizuho is primarily focused on Asia and has been dramatically expanding its business in this region.



- Mizuho Bank Branches and Sub-Branches
- ▲ Mizuho Bank Representative Offices
- Mizuho Bank Subsidiaries, etc.
- ◆ Mizuho Securities, Mizuho Trust & Banking, and other subsidiaries, etc.

As of April 1, 2022

## Australia

- Sydney ●◆
- Sydney Branch
  - Mizuho Securities Asia Limited (Sydney Office)

## Cambodia

- Phnom Penh ●
- Phnom Penh Branch

## India

- Ahmedabad ●
- Ahmedabad Branch
- Bangalore ●
- Bangalore-Devanahalli Branch
- Chennai ●
- Chennai Branch
- Mumbai ●◆
- Mumbai Branch
  - Mizuho Securities India Private Limited
- New Delhi ●
- New Delhi Branch

## Indonesia

- Jakarta ■
- PT. Bank Mizuho Indonesia

## Malaysia

- Labuan ●
- Labuan Branch
- Kuala Lumpur ●■
- Labuan Branch Kuala Lumpur Marketing Office
  - Mizuho Bank (Malaysia) Berhad

## Myanmar

- Yangon ●●
- Yangon Branch
  - Thilawa Front Office

## The Philippines

- Manila ●
- Manila Branch

## Singapore

- Singapore ●◆◆◆
- Singapore Branch
  - Mizuho Securities (Singapore) Pte. Ltd.
  - Asset Management One Singapore Pte. Ltd.
  - Mizuho Information & Research Institute Asia Pte. Ltd.

## Thailand

- Bangkok ●
- Bangkok Branch
- Rayong ●
- Eastern Seaboard Branch

## Vietnam

- Hanoi ●
- Hanoi Branch
- Ho Chi Minh City ●
- Ho Chi Minh City Branch

# Mizuho in Europe, the Middle East, Africa & Russia

Mizuho's network in Europe, the Middle East, Africa and Russia is centered on the London office and services the needs of clients in the region.



- Mizuho Bank Branches and Sub-Branches
- ▲ Mizuho Bank Representative Offices
- Mizuho Bank Subsidiaries, etc.
- ◆ Mizuho Securities, Mizuho Trust & Banking, and other subsidiaries, etc.

As of April 1, 2022

## Austria

Vienna ■

- Mizuho Bank Europe N.V. Vienna Branch

## Belgium

Brussels ■

- Mizuho Bank Europe N.V. Brussels Branch

## France

Paris ●◆

- Paris Branch
- Mizuho Securities Europe GmbH Paris Branch

## Germany

Dusseldorf ●

- Dusseldorf Branch

Frankfurt ●◆

- Frankfurt Branch
- Mizuho Securities Europe GmbH

## Italy

Milan ●

- Milan Branch

## Luxembourg

Munsbach ◆

- Mizuho Trust & Banking (Luxembourg) S.A.

## The Netherlands

Amsterdam ■

- Mizuho Bank Europe N.V.

## Russia

Moscow ■

- AO Mizuho Bank (Moscow)

## Spain

Madrid ■◆

- Mizuho Bank Europe N.V. Madrid Branch
- Mizuho Securities Europe GmbH Madrid Branch

## Turkey

Istanbul ▲

- Istanbul Rep. Office

## UK

London ●◆◆◆

- London Branch
- Mizuho International plc
- Asset Management One International Ltd.
- MHRT London Office

## Bahrain

Bahrain ▲

- Bahrain Rep. Office

## Iran

Tehran ▲

- Tehran Rep. Office

## Saudi Arabia

Riyadh ■

- Mizuho Saudi Arabia Company

## UAE

Abu Dhabi ●

- Abu Dhabi Branch

Dubai ●◆

- Dubai Branch
- Mizuho International plc DIFC Branch

## South Africa

Johannesburg ●

- Johannesburg Rep. Office

# Mizuho in the Americas

Mizuho provides a broad range of services to corporations, financial institutions and public sector entities in the Americas.



## United States

New York ●●●■◆◆◆

- New York Branch (2)
- Mizuho Bank (USA) (2)
- Mizuho Securities USA LLC
- Asset Management One USA Inc.

Atlanta ●■

- Atlanta Rep. Office
- Mizuho Bank (USA) Atlanta Rep. Office

Boston ◆

- Mizuho Securities USA LLC

Chicago ●■◆

- Chicago Branch
- Mizuho Bank (USA) Chicago Rep. Office
- Mizuho Securities USA LLC

Dallas ●■

- Dallas Rep. Office
- Mizuho Bank (USA) Dallas Rep. Office

Houston ●■◆

- Houston Rep. Office
- Mizuho Bank (USA) Houston Rep. Office
- Mizuho Securities USA LLC

Los Angeles ●■◆

- Los Angeles Branch
- Mizuho Bank (USA) Los Angeles Rep. Office
- Mizuho Securities USA LLC

San Francisco ●■◆

- San Francisco Rep. Office
- Mizuho Bank (USA) San Francisco Rep. Office
- Mizuho Securities USA LLC

- Washington, D.C. ▲
- Washington, D.C., Rep. Office

## Brazil

Sao Paulo ■

- Banco Mizuho do Brasil S.A.

## Canada

Toronto ●◆

- Canada Branch
- Mizuho Securities Canada Inc.

Calgary ●

- Calgary Office

## Chile

Santiago ▲

- Santiago Rep. Office

## Mexico

Mexico City ●■

- Mexico Representative Office
- Mizuho Bank Mexico, S.A.

León ■

- Mizuho Bank Mexico, S.A. León Office

- Mizuho Bank Branches and Sub-Branches
- ▲ Mizuho Bank Representative Offices
- Mizuho Bank Subsidiaries, etc.
- ◆ Mizuho Securities, Mizuho Trust & Banking, and other subsidiaries, etc.

As of April 1, 2022

## 3. India operations

# Mizuho Bank in India – Overview

---

**Mizuho is one of the largest foreign banks present in India.**

- Offices in five locations covering length and breadth of the country
- 25+ years of presence
- Cutting edge wholesale banking products and solutions
- Wide global network

**A1+**

ICRA highest rating for Mizuho India branches

**400+**

Number of employees in India

**25+**

Years of operation in India

**1000+**

Number of corporate customers in India

**18%+**

Strong Capital Adequacy Ratio (CAR) in India

**5**

Offices in India  
(Mumbai, Gurugram- Delhi, Chennai, Bangalore, Ahmedabad)

# Disclaimer

---

The above proprietary presentation (the “Presentation”) is given for general informational purposes only. Until a Definitive Agreement is executed and delivered, there shall be no legal obligations owed by either party of any kind whatsoever with respect to any of the material contained in this Presentation. The term “Definitive Agreement” shall mean a legally binding agreement setting forth the terms and conditions and other provisions relating to any transaction. All of the information contained in this Presentation is subject to further modification and any and all forecasts, projections or forward-looking statements contained herein shall not be relied upon as facts nor relied upon as any representation of future results which may materially vary from such projections and forecasts.

You should obtain your own independent advice on the accounting, tax and legal aspects of the proposed solution outlined in this Presentation. You agree that you are not relying and will not rely on any communication (written or oral) of Mizuho Bank, Ltd. (“Mizuho”) as investment advice or as a recommendation to enter into any transaction, and that you are capable of assessing the merits of and understanding (on your own behalf or through independent professional advice), and should you enter into a Definitive Agreement with Mizuho, you will do so because you understand and accept, the terms and conditions and risks (including but not limited to economic, competitive, operational, accounting, tax and legal risks) of such transaction. Mizuho does not in any way warrant, represent or guarantee the accounting, tax or legal results of the transaction described in this Presentation nor does it hold itself out as an accounting, tax or legal advisor to any party.

Nothing contained herein is in any way intended by Mizuho to offer, solicit and/or market any security or any securities related product which Mizuho is otherwise prohibited by Japanese, or any other applicable laws, rules, regulations, or guidelines from offering, soliciting, or marketing.

The reference throughout this Presentation to Mizuho may be a generic reference to Mizuho and its affiliates. Accordingly, the legal entity which may enter into any transaction or provide any service described in this Presentation may, at the option of Mizuho and subject to any legal/regulatory requirement, be any Mizuho affiliate, such as Mizuho Securities Co., Ltd. (provided that such Mizuho affiliate is permitted and, if required, appropriately licensed and/or registered to engage in such activities in accordance with applicable laws, rules, and regulations).

Any non-public information provided to Mizuho will be maintained in accordance with Mizuho's internal policies and will be shared with other Mizuho affiliates to the extent deemed necessary by Mizuho to consummate the transaction or provide the product or service described in this Presentation, unless Mizuho otherwise agrees in writing.